

# Update NEWSLETTER 6

www.synapse.ne.jp/update/

June 2011 No. 249

## Preparatory Measures for Dealing with Disasters

The Eastern Japan Great Earthquake (東日本大震災, Higashi Nihon Daishinsai) caused a great deal of damage to Japan. Many people saw the news and thought "It not just an affair of other people". Unfortunately, Japan is a country subject to frequent earthquakes, typhoons volcanic eruptions and tsunami. In addition to it, we need to be careful of landslides in the rainy season. In schools, students learn how to prepare measures for those things through disaster simulation drills. Let's see what Japanese people learn, and hopefully it will help you to prepare yourself.

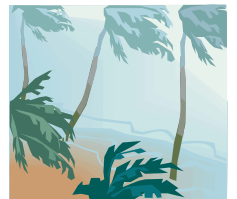
### Earthquake



1. If you feel an earthquake, find somewhere safe, such as under a solid table.
2. Wait until the shaking calms down, then check all fires are off.
3. Make sure you have an escape door.
3. While it is not shaking, go out wearing solid shoes.  
If there is a tsunami warning, go to somewhere high immediately.
4. Help each other, check if your neighbors are safe. Be careful with leakage of electricity or gas.
5. Turn the radio on, get accurate information.  
Try not to use the phone, as much as possible.
6. When you evacuate, do not use a car, especially in the cities.  
Don't go near walls, cliffs, riversides or bridges.  
(Most of the schools, community centers and *fukushi-kans* are designated as emergency shelters. If you don't know where to go, please ask the city hall or check this URL:  
<http://www.city.kagoshima.lg.jp/var/rev0/0034/3504/2011322154958.pdf> (Kagoshima city, Japanese only)
7. Prepare yourself to survive at least 3 days.  
\*See the emergency supplies list.  
Do not go into damaged houses.

### storm and flood

1. Get information about the weather everyday during the rainy season and typhoon season.
2. If a typhoon is approaching your area, put things that might be blown around in side. If you don't have storm shutters, put masking tape on the windows, so that the windows wouldn't shatter even if something smashed into them because of the wind.
3. Before the typhoon gets bad, go shopping and buy enough food for a few days.
4. Put water in the bath. (In case water supply is cut off)  
\*Usually, typhoons going through the west side of the prefecture are strong.  
\*The sea level goes up because of the influence of low pressure.  
\*When a typhoon is approaching, the atmosphere is subject to whirlwinds.
5. If you are outside;  
You need to aware that the water level goes up very quickly. Do not go near sandbanks or riverbanks. If you are already near a river or a dam, and if you hear a siren, it means the water level is going up quickly.  
Listen to the local people. They know about the area very well.
6. If it starts raining very heavily;  
Try not to drain water as much as you can especially in the city.  
Do not go near rivers.  
If you live near a river, take refuge somewhere else.  
Places among mountains, land developed for housing lots, alluvial fans, cliffs, steep slopes are subject to landslides.



### Tsunami

As we saw on TV what happened during Eastern Japan Great Earthquake Disaster, came really quick. People in *Sanriku* where the place was hit by the terrible tsunami this time say "if a tsunami comes, don't think about your family, just go away in your own respective directions". Kagoshima was also damaged by tsunamis in the past.

1. If there is a tsunami warning,  
Go away from the sea shore and take refuge on high ground.  
\*At sea the tsunami speed reaches the same speed as a jet. Near the sea shore it is 10 meters per second, so you can't escape from the tsunami after you see it.  
\*The height of tsunami could be way more than one can imagine. Even if the tsunami warning is 1m, it could be more than a few times bigger depending on the topography of the coast.  
\*Tsunami comes even if there is no ebb tide. Depending on how the earthquake occurs or the topography of the place, there are many patterns of tsunami.  
\*Tsunami comes again and again, so until it calms down totally do not go near the shore.

Events for This Month P2-P3

Preparatory Measures for Dealing  
with Disasters P4

Public Facilities for Rainy Days P5

The basic philosophy of Satsuma

- Jissinko Iroha Uta vol.16 P5

Latest Info P6

Satsuki Calendar P6

Fortune-telling P6

Movie Guide P7

Movies on TV P7

Music & Art P8

National Holiday

There is no national holiday this month.

→ continued on page 4

# Events

## HANA-SHOBU MATSURI @ HIRAKAWA ZOO (JAPANESE IRIS FESTIVAL)

(はなしょうぶまつり / 花しょうぶまつり)  
Full of Japanese iris at "Hana-shobu en in Hirakawa Zoo! Nice to walk in the garden looking at the flowers. Some events will be held (details below).

☆Learn how to grow Japanese iris!  
(Hana shobu matsuri engei kyoshitsu / 花しょうぶまつり園芸教室)

June 4 (Sat) 13:00 ~ 15:00

100 people

\*a numbered ticket (given to people in the order of their arrival) required.

☆Open-air tea ceremony at the Japanese iris garden

(Nodate / 野点)

June 5 (Sun) 13:30 ~ 15:00

Fee: free

100 people

☆Gather Japanese iris

(Hana shobu-no hana-kari / 花しょうぶの花狩り)

\*You can gather the flowers at the end of the season free.

June 12 (Sun) 14:00 (Until all the flowers gone)

### About the Japanese Iris Festival

Date: May 21 (Sat) ~ June 12 (Sun)

Time: 9:00 ~ 17:00

Place: Japanese iris garden, Hirakawa Zoo, Hirakawa town, Kagashima city

Entrance fee: Adults 500 yen

Elementary & J.H.S.Student 100 yen

Car park: 200 yen

Info: Hirakawa Zoo / 099-261-2326

## HIROSATO ZUSHO AND THE TIME HE LIVED

(企画展「調所広郷とその時代」)

Hirosato Zusho was a chief retainer of the Satsuma clan in the Edo Era who conducted Tenpō Reforms and made the basis of Japan's first Western style industries by Nariakira Shimazu, the 28th Satsuma's feudal lord.

Date: Until August 21 (Sun)

Time: 9:00 ~ 17:00

Place: Museum of Culture REIMEIKAN

Info: Reimeikan / 099-222-5100

Admission fee: Adults 300 yen

## OTAUE-SAI

### (RICE PLANTING FESTIVAL)

(おたうえさい / お田植え祭)

A festival to invoke good crops. After the purification young men and women plant rice. People dedicate dances such as yakko (manservant) dance, stick dance and komuso (Zen priest) dance. Yakko dance and komuso dances are cultural assets of Kagoshima prefecture.

\*Rice planting starts 11:00.

Date: June 5 (Sun)

Time: 9:00 ~

Place: Nitta shrine, Satsuma-sendai city

Info: Nitta shrine / 0996-22-4722

## YAMAGAWA MINATO MATSURI

### (YAMAGAWA PORT FESTIVAL)

(やまがわ みなと まつり / 山川みなと祭り)

Fishing boat parades (8:30 ~ 9:30), dance parades (10:10 ~ 11:40), fireworks display (6th 20:00 ~) and other things will be held. Catching bonito with your bare hands (children only) and the dried bonito shaving race (11:00 ~ 12:00) are especially worth joining!

Date: June 5 (Sun)

Time: 8:00 ~ 17:00

Place: Around Yamagawa port, Ibusuki city

Info: Executive / 0993-34-1141

## RYUMONJI WARE JIROTA POTTERY FESTIVAL

(りゅうもんじやき じろうたがま かまもとまつり / 龍門司焼次郎太窯元祭り)

One type of Jirota-gama ware has patterns with three colours. It was specified as an intangible cultural asset of Kagoshima.

During the festival they sell pottery at a special prices.

Date: June 10 (Fri) ~ 12 (Sun)

Time: 9:00 ~ 18:00

Place: Ryumonji ware Jirota-gama, Kajiki-cho Koyamada, Aira city

Info: Ryumonji ware Jirota-gama /

0995-63-4267

## KUMO-GASSEN TAIKAI

### (SPIDER FIGHT FESTIVAL)

(くもがっせんたいかい / くも合戦大会)

The spider fight itself has 400 years of history. Golden-web spiders fight each other on a stick. The spider that spins a web on the other one's back, bites the other one or throws out the other one will win. This event was specified as an intangible cultural asset of the Agency for Cultural Affairs.

Special products sale and a raffle will also be held.

If you want to enter your golden-web spiders to fight, apply to Chiiki Shinko-ka in Kajiki shisho (0995-62-2111) by June 16 (Thu). You need to bring 3 female golden-web spiders.

Date: June 19 (Sun)

Time: 8:30 ~ 16:00

Place: Kajiki-cho Fukushi Center, Kajiki town, Aira county

Info: Kajiki town office / 0995-62-2111



Photo: Kagoshima Prefectural Visitors Bureau

## KAGOSHIMA HARU-MATSURI DAI-HANYA 2011

(かごしま はるまつり だいはんや2011 / かごしま春祭大ハンヤ2011)

Hanya-bushi is a Japanese traditional festival dance thought to have roots in the dance Amami Roku-cho. About 2,000 people from in and out of Kagoshima prefecture dance Hanya-bushi.

This event will be held at 13 places in Kagoshima city. You will want to join them if you listen to the cheerful music!

There is a food court which provides Kagoshima dishes. A raffle will also be held.

Date: June 25 (Sat) ~ 26 (Sun)

Time: 25th 10:00 ~ 20:00 / 26th 9:00 ~ 18:00

Place: Tenmonkan park, Tenmonkan, Chuo Park, East entrance square of Chuo Station, Yoshino Park and other places

Executive (Kagoshima Harumatsuri Shinkokai) / 099-225-9533

# Sports

## AMAMI SEA KAYAK MARATHON in KAKEROMA

(あまみ しーかやック まらそん in かけろま / 奄美シーカヤックマラソン in 加計呂麻)

Sea kayak marathon race at Oshima Straits.

Marathon race (36km), Half distance race (20km) and Ekiden race.

Date & Time: July 3 (Sun) 9:30 ~

Place: Oshima Straits, Setouchi town, Oshima county

Info: Executive / 0997-72-1115

URL: [http://www.e-sports.jp/sk\\_kakeroma/](http://www.e-sports.jp/sk_kakeroma/)

Entry has been closed.

## KAGOSHIMA CUP KAZAN-MEGURI YACHT RACE

(鹿児島カップ火山めぐりヨットレース)

A big scale yacht race from Kinko bay to South-west islands. About 60 yachts will participate. Some events such as family cruises will be held.

Date & Time: July 15 (Fri) ~ 20 (Wed)

Place: Sail from Kagoshima Honko, Kagoshima city

Info: Executive / 099-216-1327

URL: <http://www.kazanmeguri.com/top.html>

Entry has been closed.

## CROSS SAKURAJIMA KINKO BAY

### LONG-DISTANCE SWIM RACE

(さくらじま・きんこうわん おうだん えんえい たいかい / 桜島・錦江湾横断遠泳大会)

It is a long-distance swim race from Koike beach in Sakurajima to Iso beach which is 4.2km. 5 people in a team (1 manager and 4 swimmers). The 4 swimmers need to swim and reach the goal together.

Date: August 7 (Sun)

Time: 9:00 ~ 14:00

Place: Start Koike beach, Sakurajima

Goal Iso beach, Kagoshima city

Info: Executive / 099-229-4222

URL: <http://www.10bai.com/enei/>

Entry has been closed.

## ROUGH WATER SWIM RACE in YORON

(ラフウォータースイム イン ヨロン)

A rough water swim race will be held here in Yoron, the birthplace of this race!

Many repeaters participate in this race, because they love the beautiful sea!

There are 1.5 km, 3 km, 5km and relay (1km × 3 people) sections. A party will be held after the race.

Date: September 3 (Sat)

Time: 8:00 ~ 16:00

Place: Yoron island, Oshima county

Participation fee: 4000 yen / person

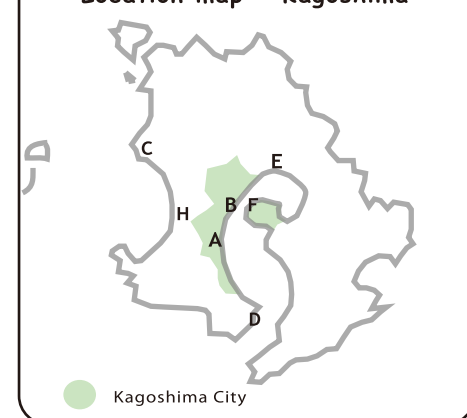
9000 yen / relay team

Deadline: August 19 (Sat)

Info: Executive / 0467-84-8639

URL: <http://www.powersports.co.jp/rws/>

### Location map - Kagoshima



## Antique & Flea Markets

### ECO & CHARITY FLEA MARKET

(エコ&チャリティフリーマーケット)

(map) → A

This event is held by "Kagoshima-no Fukushima-wo Kojo Saseru Kai (A group which is aiming to improve welfare in Kagoshima)". Miscellaneous goods, secondhand clothes, homemade goods, vegetables and flowers will be sold.

Date: June 5 (Sun) & June 12 (Sun)

\*In case of rain, it would be canceled.

Time: 10:00 ~ 16:00

Place: Kyoken Park

(near Kagoshima Chuo Station),  
Kagoshima city

Application fee: 1500 yen / booth

Appelcation Deadline:

ask the phone number below.

Info: Kagoshima-no Fukushima-wo Kojo Saseru Kai  
/ 090-1162-4967

### KAZAN MEGURI YACHT RACE FLEA MARKET (VOLCANO TOUR YACHT RACE FLEA MARKET)

(鹿児島カップ火山めぐりヨットレース「フリーマーケット」)

(map) → A

More than 200 booths will sell various things. Sell stuff you don't need and make some cash!

Date: July 17 (Sun)

\*In case of bad weather, it would be canceled.

Time: 9:00 ~ 16:00

Place: Water Front Park

Honkoh, Kagoshima port

(in front of Dolphin Port), Kagoshima city

Application fee: 4000 yen / booth

Booth: 1.8m × 3.6m

Application Deadline: June 14 (Tue)

\*You need to apply by postcard. Please  
contact the phone number below for details.

Info: Executive (Minami-nihon Living) /

099-222-7290

## Stage

### TAO 2011

(TAO 2011 TOUR 浮世夢幻打楽〜参の絵巻〜)

A Kyushu based taiko (drum) troop TAO, performing internationally comes to Kagoshima. Enjoy their powerful performance!

Date: June 25 (Sat)

Time: 18:00

Place: Shimin Bunka 1, Kagoshima city

Advance ticket: SS seat 7,000 yen

S seat 6,000 yen

A seat 4,500 yen

\*At the door 500yen more expensive.

Info: TAO / 092-721-2015

### TSUGARU SHAMISEN AMAMI SHAMISEN MUGEN

(津軽三味線X奄美三味線 ~六弦(MUGEN)~)

Young shamisen players from Kagoshima hold a charity message live show. Enjoy the beautiful sound of shamisen played by Shudai Ishii who won a best Tsuraru Shamisen Award in Japan in 2008, Kazuyuki Fumoto, Yoko Higo and Amami Tsumuginchu.

Date: July 3 (Sun)

Time: 14:00

Place: Kagoshima Chuo Kominkan,  
Yamashita town, Kagoshima city

Advance ticket: 1,500 yen

Info: Amami Tsumuginchu / 090-7537-0941



### SHIKI THEATRE COMPANY

#### CRAZY FOR YOU

(劇団四季ミュージカル「クレイジー・フォー・ユー」)

Date: July 10 (Sun)

Time: 17:30

Place: Kagoshima Shimin Bunka Hall,  
Yojiro, Kagoshima city

Ticket: SA seat 8,000 yen / SB seat 6,500 yen

A seat 5,500 yen / B seat 4,500 yen

C seat 3,000 yen

Info: Kagoshima Onkyo / 099-226-3465

### OPERA NATIONALA BUCURESTI

#### CARMEN

(ブカレスト国立歌劇場「カルメン」)

Date: July 22 (Fri)

Time: 18:30

Place: Kagoshima Shimin Bunka Hall,  
Yojiro, Kagoshima city

Ticket: Tokus seat 10,000 yen /

S seat 9,000 yen / A seat 8,000 yen

B seat 6,000 yen / C seat 5,000 yen

Info: Kagoshima Shimin Bunka Hall /

099-257-8111

## Kyushu Events

### FUKUOKA

#### MOJIKO RETRO TRAIN "SHIOKAZE-GO"

(観光トロッコ列車「潮風号」)

Retro Train "Shiokaze-go (sea breeze)" runs between Retro area, Moji port and Mekari area where you can see Kanmon Straits only from March 19th to November 27th. It takes 10 minutes, and it stops at Kyushu Railway History Museum (Kyushu Tetsudo Kinen-kan) Station, Idemitsu Museum of Arts (Idemitsu Bijutsu-kan) Station, Norfolk Hiroba Station and Kanmon Straits Mekari Station. A bus service "Mekari Zekkai Bus (Mekari Superb View Bus) from Kanmon Straits Mekari Station is a 25 minute trip and runs around Mekari area. In the tour it stops at Mekari Dai2 Tenbojo where you can enjoy the great view of Kanmon Straits.

Date: Only Saturdays, Sundays and national holidays from March 19 (Sat) to November 27 (Sun).

\*It runs everyday during the summer holidays.  
(July 21st to August 31st)

Place: Moji area, Kita-kyushu city

Info: Heisei Chikuhō Tetsudo Moji-ko Jimusyo /  
093-331-1065

### HERB FESTA in HARAZURU

(ハーブフェスタ in 原鶴)

It is an event full of flowers and nice scents! Some events such as a making herb soap class, a hanging basket class and other things will be held.

During the period, they sell "Yu-yu-ken (湯遊券)" in which you can enjoy original curry, onsen, and going on a boat.

They have free ashi-yu (foot spa) and te-yu (hand spa), too.

Date: June 10 (Fri) ~ 12 (Sun)

Time: 9:00 ~ 17:00

Place: Harazuru Onsen Herb-en, Asakura city

Info: Harazuru Onsen Ryokan Kyodo Kumiai /  
0946-62-0001

URL <http://www.harazuru.jp/>

### NAGASAKI

#### OHMURA HANA-MATSURI

(OHMURA FLOWER FESTIVAL) (大村花まつり)

Ohmura park, famous as a flower park is holding a flower festival. Many kinds of flowers are in their full glory, and they are lit up at night.

Date: March 25 (Fri) ~ June 20 (Mon)

Place: Omura Park, Omura city

Info: Ohmura city hall / 0957-53-4111

### SAGA

#### MIKAERI-no-TAKI AJISAI MATSURI

(HYDRANGEA FESTIVAL AT MIKAERI

WATERFALL)

(見帰りの滝あじさいまつり)

50 kinds, about 40,000 hydrangea are in their full glory! A hydrangea exhibition, 3 on 3 basketball, Hydrangea photo contest and other things will be held. During the festival, the flowers will be lit up at night.

Date: June 1 (Wed) ~ June 30 (Thu)

Place: around Mikaeri-no-Taki, Ikisa,

Ouchi town, Karatsu city

Beautification cooperation fee: 200 yen

Info: Karatsu Kankoh Kyokai / 0955-51-8312

URL <http://ouchi.fhl.ne.jp/>



Hydrangea

### SECRET KILN OKAWAUCHIYAMA "WIND BELL FESTIVAL"

(OKAWAUCHIYAMA "FURIN MATSURI")

(大川内山風鈴祭り)

Potteries in Okawauchiya make wind bells and hang them in front of the houses.

During the period many events will be held. On June 18th (Sat) "Wankin Concert (碗琴コンサート)" in which a player taps ceramic bowls like a xylophone and plays music) will be held.

Imari ware lamps are very popular and sell out every year. The sale of Imari ware lamps will be held on July 16th (Sat) from 13:00.

"Boshi Toro Matsuri (Firebrick lantern festival)" is also worth seeing. It will be held on July 16th from 16:00.

If you are thinking about buying ceramics for summer, you should go to "Natsu-no Utsuwa ten (Summer ceramics exhibition)" which will be held from July 10th (Sat) to August 31st (Tue)

Date: June 18 (Sat) - August 31 (Wed)

Place: Okawauchi town, Imari city

Info: Executive (Furin Matsuri Jikko linkai) /

0995-23-7293

<http://www.imari-ookawachiyama.com>

### KUMAMOTO

#### TAKASE URAKAWA HANA SHOUBU MATSURI

(TAKASE URAKAWA JAPANESE IRIS FESTI-

VAL) (高瀬川花しょうぶまつり)

About 66,000 irises in full bloom in front of old stone walls and the stone bridges. The flowers are lit up until 22:00. The main event will be held from 18:30 on the 4th of June, and a concert, an open-air tea ceremony and other things will be held.

Date: May 27 (Fri) ~ June 11 (Sat)

Place: Takase Uragawa Mizugiwa Ryokuchi Park,  
Tamana city

Info: Tamana Tourism Association / 0968-72-5313

### HANASHINOBU CONCERT

(はなしのぶコンサート)

Hanashinobu is the flower which grows wild in the rainy season at Aso (Polemoniaceae / Jacob's-ladder or phlox family). People who love these flowers hold an annual open-air concert. You can enjoy the beautiful flowers and the sound of mandolins. 10:30 ~ 12:00

Date: June 26 (Sun)

Place: Kyukamura Minami-aso, Takamori-machi,  
Aso county

Info: Kyukamura Minami-aso / 0967-62-2111



# Preparatory Measures for Dealing with Disasters

## Dangerous signs;

### Sign of landslides

Water gushes out of cliffs  
Cracks in cliffs  
Pebbles fall from cliffs  
Strange sights such as tree roots cut off from cliffs  
Water of wells or streams get muddy  
Cracks on roads  
Cracks on walls of a house or retaining walls  
leaning of house, retaining walls, trees or utility poles

### Sign of debris flows

Rumbling of mountains  
Water level drops inspite of it raining  
River water gets muddy or floating driftwood  
Rotten smell of soil

## When you evacuate in a flood;

### The depth you can walk

The depth you can walk is up to 70cm for men, 50cm for women (if the water is not running). If the water is deeper than around your hip, you shouldn't walk in it. Just go somewhere high and wait for the rescue.

### Shoes

Do not walk in the water barefoot or in boots. sports shoes with shoelaces are the best.

### Tied together with a rope

If possible, tie people onto a rope and walk together in a line.

### Pay attention your steps

You never know what's in the water. Get a long stick and check the safety where you walk.



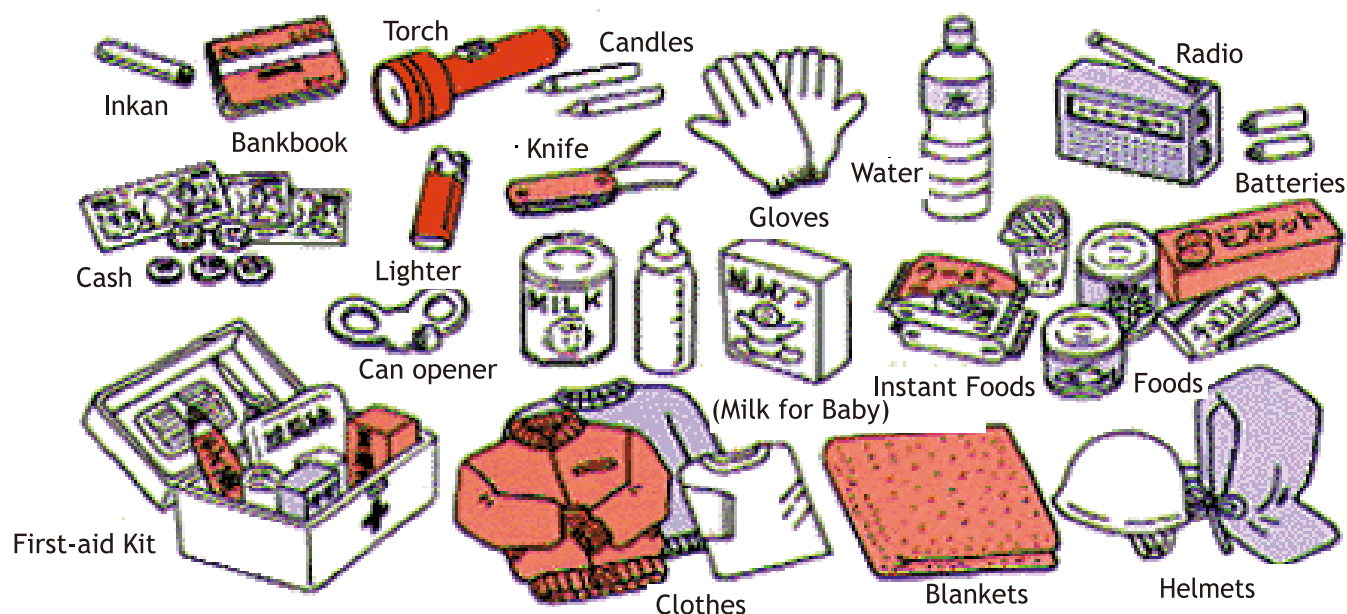
## Emergency Supplies

The Fire Defense Agency recommends those things below as emergency supplies.

If you wear glasses or contact lenses, they also need to be in your emergency supply bag.

If you buy those things, you need to make sure you know how to use them before you put them in the bag, and put the bag somewhere easy to get at.

You also need to regularly check expiration dates of foods, water, batteries, medicines and baby milk (if you need).



## Related Web Sites

The Cabinet Office, government of Japan; "Portal Site on Policies for Foreign Residents". It has information in Japanese, English, Portuguese and Spanish. You can find many links about the earthquake there.

<http://www8.cao.go.jp/teiju-portal/eng/index.html>

Japan Earthquake How to Protect Yourself; now in 43 languages

<http://nip0.wordpress.com/>

The Meteorological Agency; Weather, Climate & Earthquake Information in English

<http://www.jma.go.jp/jma/indexe.html>

Facebook; Earthquake Updates for Foreigners in Japan

<http://www.facebook.com/earthquakeinfo.foreigner>

American Psychological Association; Managing your distress about the earthquake from afar

<http://www.apa.org/helpcenter/distress-earthquake.aspx>



In the Children's Day article last issue we explained "Shobu-yu" as "iris-root bath". It is actually "sweet-flag bath". Sweet-flag and iris are different plants. Sweet-flag is the arum family of plants and iris is the iridaceae family of plants.



# Public Facilities for Rainy Days

Rain..., Wet and not much fun? Check this out and learn where you can find places for some fun!

There are many public facilities in the city where you can enjoy yourself and learn about the history of Kagoshima, see beautiful works by various artists, enjoy the world of books, science, craft works and other things!

## ① Reimeikan (黎明館)

Kagoshima Prefectural Museum of Culture.

It was established in 1983, to commemorate the 100th year since the Meiji period started.

This museum introduces you to Kagoshima's history, archaeology, folklore, arts and crafts.

Tsurumaru castle used to be here. You can see remains of the castle, such as the moat, the stone wall and the bridges.

On the 3rd floor, there is a free zone, where you can play Japanese traditional toys and try Japanese armor and take pictures free!

You also can see beautiful *kimonos*, a basket palanquin, toys, folding fans, good luck charms and other things which were used in Last year's NHK drama "Atsu-hime", all free.

Place: 7-2 Shiroyama cho, Kagoshima city

Tel: 099-222-5100

Open: 9:00 ~ 17:00

Closed: Monday, 25th every Month

(except Saturday & Sunday)

and 31st of December ~ 2nd of January

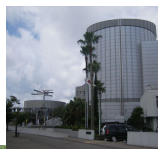
Entrance fee: Adult 300 yen



## ④ Kagoshima Municipal Science Hall (鹿児島市立科学館)

It is built aiming to cultivate people's sense of science and creative power.

The exhibits mainly concern volcanos and rockets, which are famous in Kagoshima and the law of the natural world, science technology, space and other things. They also have a space theater. You can enjoy planetarium and omnimax theater there.



Place: 2-31-18 Kamoike, Kagoshima city

Tel: 099-250-8511

Open: 9:30 ~ 18:00

Closed: Tuesday (if Tuesday is a holiday, the next day will be closed instead),

and 29th of December ~ 1st of January

Entrance fee: H.S.Student and up 400 yen

E.S. & J.H.S.Student 150 yen

Infant free

\*You need to pay admission fee for the space theater.

(H.S.Student 500 yen / E.S. & J.H.S.Student 200 yen)

[http://www.synapse.ne.jp/kmsh-science/index\\_01.html](http://www.synapse.ne.jp/kmsh-science/index_01.html)

## ② Kagoshima Aquarium (いおワールドかごしま水族館)

About 5000 kinds of the 30000 creatures which live in the sea around Kagoshima and South west islands are exhibited.

The huge tank, *Kuroshio* (Black Stream) tank is wonderful! a Big Whale Shark and large rays are swimming gracefully. You also can enjoy the Touch Pool where you can touch the creatures such as starfish, sea cucumbers and other things. There are arapaimas at the Aqua gallery.



Place: 3-1 Honko-shinmachi, Kagoshima city

Tel: 099-226-2233

Open: 9:00 ~ 17:00

Closed: Around new year

Entrance fee: Adult 1500 yen

## ③ Museum of the Meiji Restoration (維新ふるさと館)

It is located along the *Kotsuki* river.

It's a historical tourist facility, focused on the Meiji Restoration.

At the 1st floor, they introduce *Satsuma* in the closing days of the *Tokugawa* shogunate, *goju kyoiku* (education in the *Satsuma* Clan) and the history of *Satsuma*.

At the basement floor, sounds, lights and robots show you the Meiji Restoration. You can learn how *Saigo* and *Okubo* led Japan to be a modern nation.

*Atsu-hime-kan* which used to be in Dolphin Port has moved to this building. They exhibit the beautiful *kimonos*, rooms and other things which were used in the popular NHK drama "Atsu-hime"

Place: 23-1 Kajiya cho, Kagoshima city

Tel: 099-239-7700

Open: 9:00 ~ 17:00

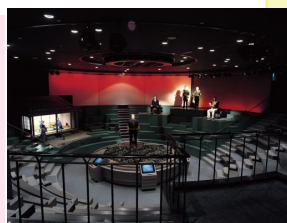
Closed: open every day of the year

Entrance fee: H.S.Student and up 300 yen

E.S. & J.H.S.Student 150 yen

Infant free

URL: <http://www.ishinifurusatoken.info/>



## ⑤ Kagoshima Culture Craft Village (かごしま文化工芸村)

Relax and enjoy making pottery, craft, woodworks, bamboo works and other things in nature!

They have various classes which you need to apply for in advance, but you can also make what you want if you just go and have a try.

Place: 2758 Nishi-beppu cho, Kagoshima city

Tel: 099-281-7175

Open: 9:30 ~ 18:00

Closed: Tuesday (If it is a holiday, the next day will be closed instead), and 28th of December ~ 4th of January

Fee: Adult 200 yen / Child 100 yen



## The basic philosophy of *Satsuma*

*Jissinko Iroha-uta* (日新公いろは歌) vol.16

*Iroha-uta* is originally a Japanese short poem. It is a perfect pangram, containing each character of the Japanese syllabary (*hiragana*) exactly once.

*Jissinko iroha-uta* are 47 poems each of which begin, respectively, with the original *iroha* poems first syllabary.

They also became the spirit of *Goju kyoiku* (郷中教育: The *Satsuma* education system).

The fifteenth poem (starting with the letter "た"):

種子となる心の水にまかせずば 道より外に 名も流れまじ  
(Tane-to Naru Kokoro-no Mizu-ni Makasezuba  
Michi-yori Hoka-ni Na-mo Nagaremaji)

If you don't surrender yourself to greed, which is the origin of sins, a bad reputation of immoral behavior will be averted.



## LATEST INFO

More hot events are coming! Check them out and join in!

# Yokohama Chinatown Exhibition and Asian Sundries Bazaar



Chinese snacks from Chinatown

Great opportunity to taste sweets from Yokohama and real Chinese snacks from Chinatown. Asian Sundries Bazaar will also be held. Traditional excellent articles, industrial art objects and sundries will be sold.

Date: June 23 (Thu) ~ June 29 (Wed)

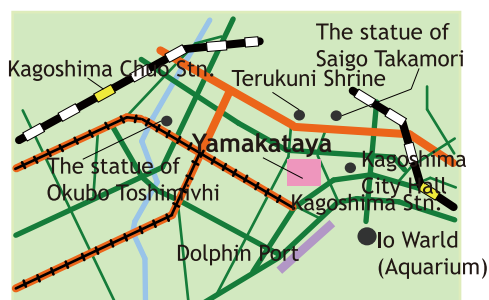
Time: 10:00 ~ 20:00 (until 17:00 on the 29th)

Place: Yamakataya 1gokan 6F, Kagoshima city

Info: Yamakataya / 099-227:6327



Sweets from Yokohama and Asian Sundries



## みなづき 水無月 (minazuki)

Japanese has a different name for each month. We call June, "Rokugatsu" usually, but we also have another name "Minazuki". It means the month there is no water after the rainy season. Some people also say that it's the month you need to put water in the rice field. Recently people say that it is the month there is no water left in the sky, because of the rainy season.

## Minazuki Calender

### 衣替え (Koromo Gae)

June 1 (Wed)

The day of changing clothes.

This custom, which started in the Heian era, followed a Chinese custom. The date of changing clothes was decided as the 1st of April and the 1st of October.

From the Edo era the date changed to the 1st of June and 1st of October.

Now, government offices, business offices and schools follow this custom in spite of the hot weather.

### 芒種 (Boshu)

June 6 (Mon)

The day of seeding for rice, wheat and other cereals. Now, the seeding is earlier than this.

### 入梅 (Nyubai)

June 11 (Sat)

The day marking the start of the rainy season. Plums (ume) turn yellow, and it tells you that the rainy season is coming. (It is different from the actual start of the rainy season.)



### 父の日 (Chichi no Hi)

June 19 (Sun)

This day follows American Father's day. It started to be known during the 1950's among Japanese people. In Japan, Mother's day is the bigger event, but many people buy presents for their fathers. Some children also give yellow roses.

### 夏至 (Geshi)

June 22 (Wed)

The summer solstice. Compared with the winter solstice, the daytime is 4 hours longer on this day. In Japan, the old calendar says that this day is the middle of summer. It is in the middle of the rainy season, also the busiest time of the year for farmers.

### 夏越しの大祓

### (Great Purification of Summer)

June 30 (Thu)

It is an annual event which is held on the 30th of June.

People absolve their sins and impurities at shrines.

\* Some of the dates above depend on the lunar calendar, so they change every year.

## Fortune-telling

June 1 ~ June 30



### January Birthday:

Are you stressed? Relax is this month's key word. Fill the bath up, put in a few drops of aroma oil, and enjoy relaxing. You also need to try to get enough sleep.

### February Birthday:

Mistakes and hardships make you grow. Try to understand what you are learning through those experiences.

### March Birthday:

Your head is clear this month. Avoid places and people which you feel are not on your wavelength.

### April Birthday:

School trip, business trip or going on holiday; it is good to go somewhere this month. You'll have no trouble and will enjoy traveling a lot. Buying a little present for your friends is also a lucky action.

### May Birthday:

Avoid noises, watching violent programs, talking of negative things or gossip. Comfortable music and positive talk makes your life happier.

### June Birthday:

Your environment might change a lot this month. You might be worried or feel lonely. But, it is the month of movement for you and the month of preparation for the future. So accept the new environment and try to get used to it.

### July Birthday:

Set your aim higher and do your very best. Imagine your great success. It will come true.

### August Birthday:

When you feel stress, remember to breathe deeply. It calms you down. Meditation before you go to bed is also good.

### September Birthday:

You might have an opportunity to become a leader. Do not hesitate. You might have difficult time, but people trust you can do it. And at the end of this year you'll find you've learnt so much and you've grown mentally.

### October Birthday:

Talk about your dreams or things you like with your friends who have same interest as you. You can find a path to make your dream come true through it.

### November Birthday:

You'll meet many people, and more people than you imagine might need your help. Helping these people is not for them in the end, but for yourself. Everything returns to you in the end. Do not expect things in return from them. Show them your sincerity, then rewards will come back to you.

### December Birthday:

Do not worry about having a hard time. Heaven is always watching you. Everything you do returns back to you. Keep doing good things and forget about people who annoy you, then all the good things will return to yourself.



# Movie Guide

★ Foreign movie ☆ Japanese movie

<b>TOHO Cinemas Yojiro</b> 東宝シネマズ与次郎 Phone: 099-206-6544	☆ <i>Meitantei Conan</i> / 名探偵コナン 沈黙の15分 (April 16 ~) ☆ <i>Gants Perfect Answer</i> (April 23 ~) ☆ <i>Yokame-no Semi</i> / 八日目の蟬 (April 29 ~) ☆ <i>Gaku</i> / 岳 -ガク- (May 7 ~) ★ <i>Black Swan</i> (May 11 ~) ★ <i>Pirates of the Caribbean: On Stranger Tides 3D</i> (May 20 ~) ★ <i>The Adjustment Bureau</i> (May 27 ^) ☆ <i>Princess Toyotomi</i> (May 28 ~) ☆ <i>Buddha</i> / 手塚治虫のブッダ 赤い砂漠よ! 美しく (May 28 ~) ★ <10AM Cinema Festival> <i>Edward Scissorhands</i> (May 7 ~) ☆ <i>Moshi Koko-yakyu-no Joshi Manager-ga Drucker-no "Management"-wo Yondara</i> / もし高校野球の女子マネージャーがドラッカーの『マネジメント』を読んだら (June 4 ~)	☆ <i>Kiseki</i> / 奇跡 (June 4 ~) ☆ <i>Paradise Kiss</i> / パラダイス・キス (June 4 ~) ★ <10AM Cinema Festival> <i>Breaking Away</i> (June 4 ~) ☆ <i>Saya Zamurai</i> / さや侍 (June 11 ~) ★ <i>X-men First Class</i> (June 11 ~) ☆ <i>Hoshi Mamoru Inu</i> / 星守る犬 (June 11 ~) ★ <10AM Cinema Festival> <i>La Strada</i> (June 11 ~) ★ <i>Skyline</i> (June 18 ~) ★ <10AM Cinema Festival> <i>La Dolce Vita</i> (June 18 ~) ★ <i>Super 8</i> (June 24 ~) ☆ <i>Andalucia Megami-no Hofuku</i> / アンダルシア 女神の報復 (June 25 ~) ☆ <i>Gaikokan Kuroda Kosaku</i> / 外交官 黒田康作 (June 25 ~)
<b>Mitte 10</b> ミッテ 10 Phone: 099-812-6662 (Amu Plaza 6F)	☆ <i>Meitantei Conan</i> / 名探偵コナン 沈黙の15分 (April 16 ~) ☆ <i>Gants Perfect Answer</i> (April 23 ~) ☆ <i>Yokame-no Semi</i> / 八日目の蟬 (April 29 ~) ☆ <i>Gaku</i> / 岳 -ガク- (May 7 ~) ★ <i>Black Swan</i> (May 11 ~) ☆ <i>KOKAKU KIDOTAI STAND ALONE COMPLEX 3D</i> / 攻殻機動隊 STAND ALONE COMPLEX 3D (May 11 ~) ☆ <i>TOMIE - UNLIMITED</i> / 富江-アンリミテッド (May 11 ~) ★ <i>Pirates of the Caribbean: On Stranger Tides 3D</i> (May 20 ~) ★ <i>The Adjustment Bureau</i> (May 27 ~) ☆ <i>Princess Toyotomi</i> (May 28 ~) ☆ <i>Buddha</i> / 手塚治虫のブッダ 赤い砂漠よ! 美しく (May 28 ~) ★ <Livespire> <i>World Classics @ Cinema: Swan Lake</i> (May 28 ~) ☆ <i>Kiseki</i> / 奇跡 (June 4 ~) ☆ <i>Paradise Kiss</i> / パラダイス・キス (June 4 ~)	☆ <i>Moshi Koko-yakyu-no Joshi Manager-ga Drucker-no "Management"-wo Yondara</i> / もし高校野球の女子マネージャーがドラッカーの『マネジメント』を読んだら (June 4 ~) ☆ <Cinema Kabuki> <i>Nezumi Kozo</i> / 鼠小僧 (June 4 ~) ☆ <i>Saya Zamurai</i> / さや侍 (June 11 ~) ★ <i>X-men First Class</i> (June 11 ~) ☆ <i>Hoshi Mamoru Inu</i> / 星守る犬 (June 11 ~) ☆ <i>Gokaiger Goseiger Super Sentai 199 Hero Dai-kessen</i> / ゴーカイジャー ゴセイジャー スーパー戦隊199ヒーロー大決戦 (June 11 ~) ★ <i>Skyline</i> (June 18 ~) ☆ <Cine響kyo> <i>MAESTRO 6 Gustavo Adolfo Dudamel Ramirez &amp; Orquesta de la Juventud Venezolana Simón Bolívar</i> (June 18 ~) ★ <i>Super 8</i> (June 24 ~) ☆ <i>Andalucia Megami-no Hofuku</i> / アンダルシア 女神の報復 (June 25 ~) ☆ <Geki x Cine> <i>Bara-to Samurai</i> / 薔薇とサムライ (June 25 ~)
<b>Gardens Cinema</b> ガーデنز シネマ 099-222-8746	★ <i>The White Ribbon</i> (German) (May 21 ~ June 10) ☆ <i>Tsumetai Nettaigyo</i> / 冷たい熱帯魚 (May 21 ~ June 10) ☆ <i>After Life</i> / ワンダフルライフ (June 11 ~ June 17)	☆ <i>Maboroshi-no Hikari</i> / 幻の光 (June 11 ~ June 17) ★ <i>Certified Copy</i> (June 18 ~ July 8) ★ <i>Au Revoir Taipei</i> (June 18 ~ July 8)
<b>Rena Theater Kanoya</b> リナシアター Phone: 0994-35-1001	☆ <i>Saibancho! Koko-wa Choeki 4nen-de Dodesuka</i> / 裁判長 ここは懲役4年です (June 4 ~) ☆ <i>Wasao</i> / わさお (June 18 ~)	

\* Schedules are subject to change without notice, so please confirm with the cinema.

## Movies on TV

June

- |    |       |      |                                          |
|----|-------|------|------------------------------------------|
| 1  | 13:00 | BS-P | Papillon                                 |
|    | 19:00 | BS-T | Driving Miss Daisy                       |
|    | 22:00 | BS-P | Timeline                                 |
| 2  | 13:00 | BS-P | The Cincinnati Kid                       |
| 3  | 13:00 | BS-P | Bullitt                                  |
| 4  | 18:30 | BS-T | Mar Adentro / The Sea Inside (Spanish)   |
| 5  | 21:00 | KKB  | Pirates of the Caribbean: At World's End |
| 6  | 13:00 | BS-P | Tony Arzenta / Big Guns (Italian)        |
|    | 22:00 | BS-P | Rain Man                                 |
| 7  | 13:00 | BS-P | Le Gang (French)                         |
|    | 21:00 | BS-J | The Italian Job                          |
|    | 22:00 | BS-P | La Mome / La Vie en Rose (French)        |
| 8  | 13:00 | BS-P | Mort d'un Pourri (French)                |
|    | 22:00 | BS-P | The Green Mile                           |
| 9  | 13:00 | BS-P | The Sting                                |
| 10 | 13:00 | BS-P | The Color of Money                       |
|    | 21:00 | KYT  | No Reservations                          |
| 11 | 21:00 | BS-A | Transporter 3 (French)                   |
| 13 | 13:00 | BS-P | Mary Poppins                             |
|    | 21:00 | BS-J | A Movie is a Movie (Korean)              |
|    | 22:00 | BS11 | Bombon: El Perro (Spanish)               |
| 14 | 13:00 | BS-P | Singin' in the Rain                      |
| 15 | 13:00 | BS-P | The Wizard of Oz                         |
|    | 20:00 | BS11 | Throw Down / 柔道龍虎房 (Yue Chinese)         |
| 16 | 13:00 | BS-P | An American in Paris                     |
| 17 | 13:00 | BS-P | Hairspray                                |
| 18 | 14:00 | TwIV | Klute                                    |
|    | 21:00 | BS-A | Fro Love of the Game                     |

KKB = Digital 5  
 KTS = Digital 8  
 KYT = Digital 4

BS-P=BS Premium  
 BS11=BS 11  
 BS-A = BS Asahi  
 BS-J = BS Japan  
 BS-N = BS Nittele  
 BS-T = BS TBS  
 TwIV = TwiV

- |    |       |      |                                                                   |
|----|-------|------|-------------------------------------------------------------------|
| 19 | 13:45 | BS-P | Batman                                                            |
|    | 20:00 | BS11 | Hors de prix / Priceless (French)                                 |
|    | 21:00 | KKB  | X-Men                                                             |
| 20 | 21:00 | BS-J | Color of Night                                                    |
|    | 22:00 | BS-P | Batman Returns                                                    |
|    | 23:00 | BS11 | Meduzot/Jellyfish (Hebrew)                                        |
| 21 | 22:00 | BS-P | Batman Forever                                                    |
| 22 | 20:00 | BS11 | Heaven's Prisoners                                                |
|    | 22:00 | BS-P | Batman & Robin                                                    |
|    | 23:00 | BS-N | Taipei 24H (1st half) / 台北異想 (Taiwanese Hokkien)                  |
| 24 | 13:00 | BS-P | 200 Pounds Beauty (Korean)                                        |
|    | 21:00 | KYT  | The Matrix                                                        |
| 25 | 14:00 | BS-N | The Thomas Crown Affair                                           |
|    | 19:00 | BS-T | La Curee (French)                                                 |
|    | 21:00 | BS-A | The Cassandra Crossing (French, English)                          |
| 26 | 19:00 | BS-N | Sa-rang / A Love (Korean)                                         |
|    | 21:00 | KKB  | I, Robbot                                                         |
| 27 | 13:00 | BS-P | Bacheha-Ye Aseman (Persian)                                       |
|    | 21:00 | BS-J | The Nanny Diaries                                                 |
|    | 22:00 | BS-P | Batman Begins                                                     |
|    | 23:00 | BS11 | Standing in the Shadows of Motown                                 |
| 28 | 13:00 | BS-P | Song of Tibet / 益西卓瑪 (Chinese)                                    |
|    | 21:00 | BS-J | Vicky Cristina Barcelona (English / Spanish)                      |
|    | 22:00 | BS-P | The Dark Knight                                                   |
| 29 | 17:00 | BS-T | Michael Jackson Commemorated                                      |
|    | 21:00 | BS-P | JFK                                                               |
|    | 23:00 | BS-N | Taipei 24H (2nd half) / 台北異想 (Taiwanese Hokkien)                  |
| 30 | 13:00 | BS-P | Die Hohle des gelben Hundes / The Cave of the Yellow Dog (German) |

\*The above movies &amp; TV programs are subject to change without notice.

\*\*This information is as of May 31.



# Music

**SING LIKE TALKING**

- Rock

Date: June 5 (Sun)

Time: 18:00

Place: Shimin Bunka Hall 2

ticket: 6,000 yen

Info: K&amp;M Corporation / 099-223-7710

**BASE BALL BEAR**

- Rock

Date: June 9 (Thu)

Time: 19:00

Place: SR Hall

Ticket: 4,000 yen (+ 1 Drink)

Info: Kyodo Nishi-nihon / 092-714-0159

**RYUUN NAGAI** (永井龍雲)

- Pop

Date: June 11 (Sat)

Time: 17:30

Place: Shimin Bunka Hall, Shimin Hall

Advance ticket: 4,500 yen

At the door: 5,000 yen

Info: Kagoshima Onkyo / 099-226-3465

**TRIBAL ARIVALL**

- Rock, Pop

Date: June 14 (Tue)

Time: 18:00

Place: CAPARVO Hall

Ticket: 3,900 yen (+ 1 Drink)

Info: Kyodo Nishi-nihon / 092-714-0159

**SHINJI TANIMURA** (谷村新司)

- Folk

Date: June 23 (Thu)

Time: 18:30

Place: Hozan Hall (Ken Bunka Center)

Ticket: 5,500 yen

Info: Kyodo Nishi-nihon / 092-714-0159

2011 Tōhoku Earthquake and Tsunami  
Charity Recital

**SUGURU YONEZAWA (TENOR) AND  
ETSUKO YONEZAWA (SOPRANO)**

(東北関東大震災被災者支援 天賦のテノール沢傑  
・ソプラノ米沢悦子ジョイントリサイタル)

Date: June 24 (Fri)

Time: 19:00

Place: Kagoshima Kenmin Koryu Center,  
Kenmin Hall

Advance ticket: Adults 2,000 yen  
H.S.Students and below 1,000 yen

Info: Art Ongaku / 099-223-2323

**DEEP**

- R&amp;B

Date: June 28 (Tue)

Time: 19:00

Place: CAPARVO Hall

Ticket: 4,500 yen (+ 1 Drink)

Info: Kyodo Nishi-nihon / 092-714-0159

**GEZA AND THE 5 DEVILS**

- Gipsy music

(ゲザ&amp;ザ・5デヴィルズ ジプシー楽団)

Date: July 8 (Fri)

Time: 19:00

Place: Hozan Hall (Ken Bunka Center)

Ticket: 5,000 ~ 5,800 yen

Info: RO-ON / 099-223-8426

**AYAKA HIRAHARA** (平原綾香)

- Pop

Date: July 9 (Sat)

Time: 18:00

Place: Hozan Hall (Ken Bunka Center)

Ticket: 6,500 yen

Info: K&amp;M Corporation / 099-223-7710

**HIGE**

- Rock

Date: July 9 (Sat)

Time: 18:00

Place: SR Hall

Ticket: 3,800 yen (+ 1 Drink)

Info: BEA / 092-712-4221

**CHISAKO TAKASHIMA** (高嶋ちさ子)

- classic / violin

Date: July 10 (Sun)

Time: 14:00

Place: Hozan Hall (Ken Bunka Center)

Ticket: 4,500 yen

Info: Kagoshima Onkyo / 099-226-3465

**SEIKO MATSUDA** (松田聖子)

- Pop

Date: July 15 (Fri) &amp; 16 (Sat)

Time: 15th 18:30 / 16th 17:00

Place: Shimin Bunka Hall 1

ticket: 8,400 ~ 21,000 yen

\*21,000 yen ticket is a special present  
included.

\*On sale from June 18 (Sat).

Info: K&amp;M Corporation / 099-223-7710

**LYNCH.**

- Rock

Date: July 23 (Sat)

Time: 18:00

Place: SR Hall

Ticket: 3,000 yen (+ 1 Drink)

Info: BEA / 092-712-4221

**DUKE ELLINGTON ORCHESTRA**

Date: July 24 (Sun)

Time: 14:00

Place: Sendai Bunka Hall,  
Satsuma-sendai city

Ticket: 4,500 ~ 5,500 yen

Info: Sendai Machi-zukuri Kosha /  
0996-20-7570

**HIDEAKI TOKUNAGA** (徳永英明)

- Pop

Date: August 28 (Sun)

Time: 16:00

Place: Shimin Bunka Hall 1

ticket: 7,500 yen

Info: Kyodo Nishi-nihon / 092-714-0159

**YUMI MATSUTOYA** (松任谷由実)

- Pop

Date: October 4 (Tue)

Time: 18:30

Place: Shimin Bunka Hall 1

ticket: 8,400 yen

\*On sale from June 25 (Sat).

Info: Kyodo Nishi-nihon / 092-714-0159

# Art

**KAGOSHIMA CITY ART GALLERY**

4-36 Shiroyama cho, Kagoshima city

099-224-3400 / 9:30 ~ 18:00 / Closed Mondays

Admission fee: Adults 200 yen

**EARLY SUMMER STORE PRODUCT EXHIBITION**

~TANGEN KIMURA SPECIAL~

(初夏の所蔵品展 ~特集~木村探元)

May 24 (Tue) ~ July 24 (Sun)

**NAGASHIMA MUSEUM**

3-42-18 Take, Kagoshima city

099-250-5400 / 9:00-17:00

Entrance fee: Adults 1,000 yen

Lunch: 1,890 yen (weekdays only)

2,100 yen - 3,150 yen (others)

**GORGEOUS AND FLOWERY GLASSWORKS**

- THE WORLD OF ART NOUVEAU -

(華やかな花のガラス展 -アール・ヌーヴォーの世界-)

March 12 (Sat) ~ June 30 (Thu)

**MIYAKE MUSEUM**

1-4319-4 Taniyama-chuo, Kagoshima city

099-266-0066 / 10:00 - 16:30 / Closed Wednesdays

Entrance fee: Adults 300 yen

Lunch: 11:00 - 14:00 / 750 yen - 1100 yen

Tea Time: 14:00 - 18:00

Dinner: 18:00- (Bookings are required)

**THE SIGHTS OF KAGOSHIMA IN PAINTINGS**

(描かれた鹿児島の名所展)

April 2 (Sat) ~ July 17 (Sun)

**KODAMA ART MUSEUM**

8251-1 Shimo-fukumoto cho, Kagoshima city

099-262-0050 / 10:00 - 16:00 / Closed Mondays

Admission fee: Adults 500 yen

**SKETCHES BY ARTISTS FROM KAGOSHIMA**

- Kinosuke Ebihara, Reizo Otake, Mitsushi (Sanshi)

Iwashita, Michio Yamashita And Takao Kinoshita -

(郷土作家のデッサン展 -海老原喜之助・大嵩禮造・岩下三  
四・山下三千夫・木下貴雄-)

June (Tue) ~ July 4 (Sun)

**MIZUHO OSHIRO GALLERY**

6-51-25 Murasakibaru, Kagoshima city

099-813-5460 / 11:00 ~ 21:00 / Closed Wednesdays

Entrance fee: free

Hanasakan cafe 11:00 - 21:00

**TOMOKO NAGAI EXHIBITION**

(長井朋子 展 「6月の発表会」)

June 12 (Sun) ~ August 7 (Sun)

**WHITE GALLERY**

25-7 Shimotatsuo-cho, Kagoshima city

099-248-3904 / 11:00 ~ 18:00 / Closed Mondays

Lunch: 11:30 - 14:00 / 1,050 yen or 1,260 yen

Cafe: 11:00 ~ 18:00

**COLORS AND SHAPES**

- woodblock prints

**SHU KUROKI EXHIBITION** (黒木 周 版画展)

May 28 (Sat) ~ June 8 (Wed)

**AGOPAN EXHIBITION** (あごぱん 絵画展)

- paintings

June 11 (Sat) ~ June 23 (Thu)

## VISITOR CENTER

## Update



Update Newsletter is edited and issued by Visitor Center Update. We have a subscription service for the monthly Update Newsletter. If you would like to have it delivered, please send your name, address, and stamps (80yen per issue) as postage to the Kagoshima Internationalization Council (Visitor Center *Update*). We also offer information on sightseeing, transport service, accommodation and restaurants, all on the net. We'd like to hear from you. Mail us with your suggestions for future articles, and your comments about the content of Update. If you would like to write an article for Update, let us know.

Visitor Center Update / Editor: Shiho Forbes

2F Hiratabashi Bldg.. 8-13 Hirano-cho, Kagoshima City, JAPAN 892-0848

Tel: 099-224-8011 / Fax: 099-224-8012

URL: <http://www.synapse.ne.jp/update/> • E-mail [update@po.synapse.ne.jp](mailto:update@po.synapse.ne.jp)